

# NATURAL IMPRESSIONS® DUOSTONE



Concrete Pavers • Stone Pavers • Tiles • Garden Walls & Edging  
Retaining Walls • Concrete Sleepers • Concrete Blocks • Wall Cladding

# NATURAL IMPRESSIONS® DUOSTONE



**BEST PRICE** >>>  
promise

## FEATURES

- DIY friendly 'rear lip' system makes blocks easy to stack
- Contrasting texture with contemporary smooth and rock face finish
- Build unreinforced walls to 700mm or higher with an engineered design

## SUITABLE FOR

- Straight walls
- Curved garden walls
- Garden beds
- Vegetable patches



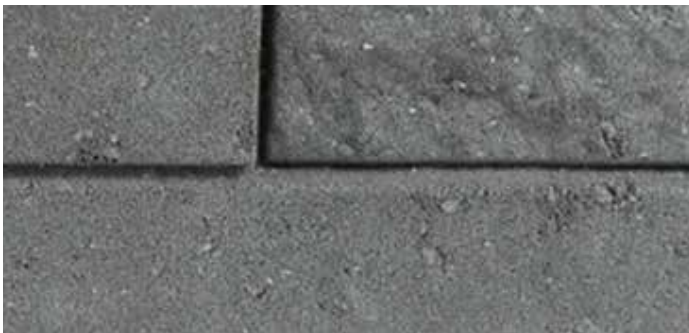
Specifications	Size (w x h x d)	No. per m <sup>2</sup>	Weight per unit	Units per pallet
Duostone	300 x 100 x 175mm	33.33	9.42kg	120
Cap	300 x 50 x 200mm	N/A	5.94kg	192

16 blocks make a full circle which gives an inside diameter of 1200mm.

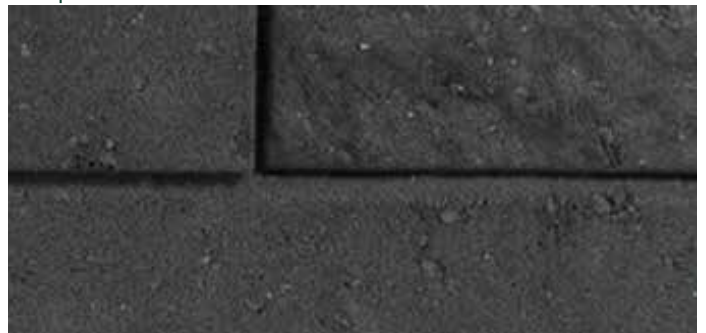
Please note due to the setback there is a cut to be made per layer from the second row and above.

## COLOUR RANGE\*

Ash



Graphite



\*Colours are an indication only. Always sight physical product colour samples before purchase.



[www.australianpaving.com.au](http://www.australianpaving.com.au)

  [australianpavingcentre](https://www.instagram.com/australianpavingcentre)



## Retaining Wall Builder

Our builder helps you choose the right block for your project. Scan the QR code to get started.